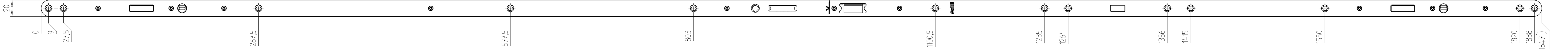
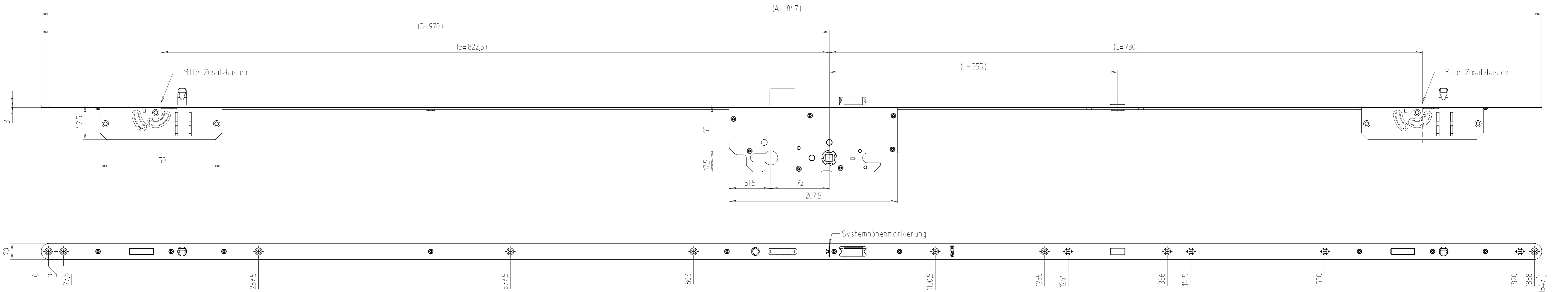
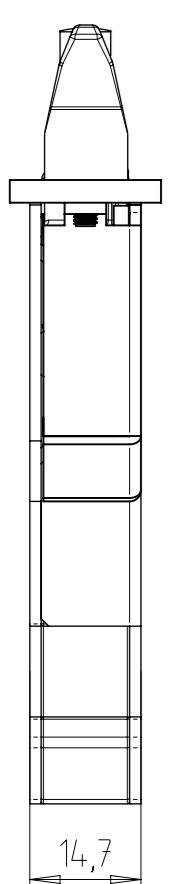


The drawing and its contents are to be kept secret from third parties, particularly competitors. The drawing and documents which go with it are not to be duplicated either in total or extract, or used in other documentation without express approval. ISO and 3D CAD. A reservation of rights in accordance with §2 PatG is declared for the event that a patent is granted.

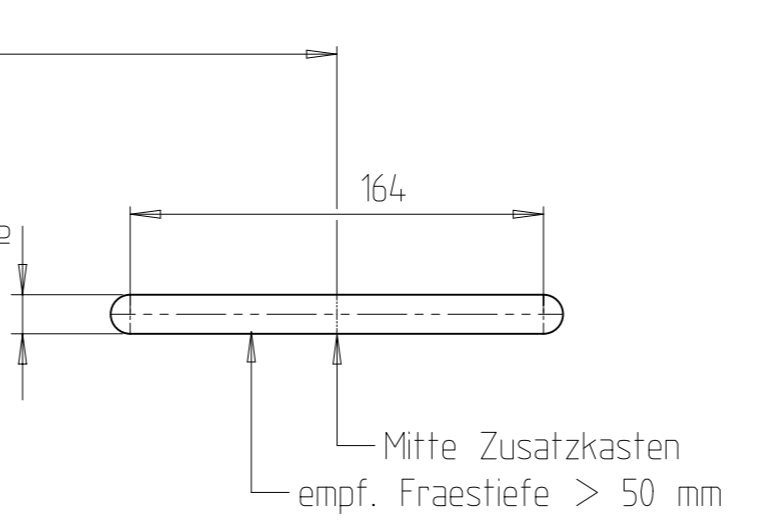
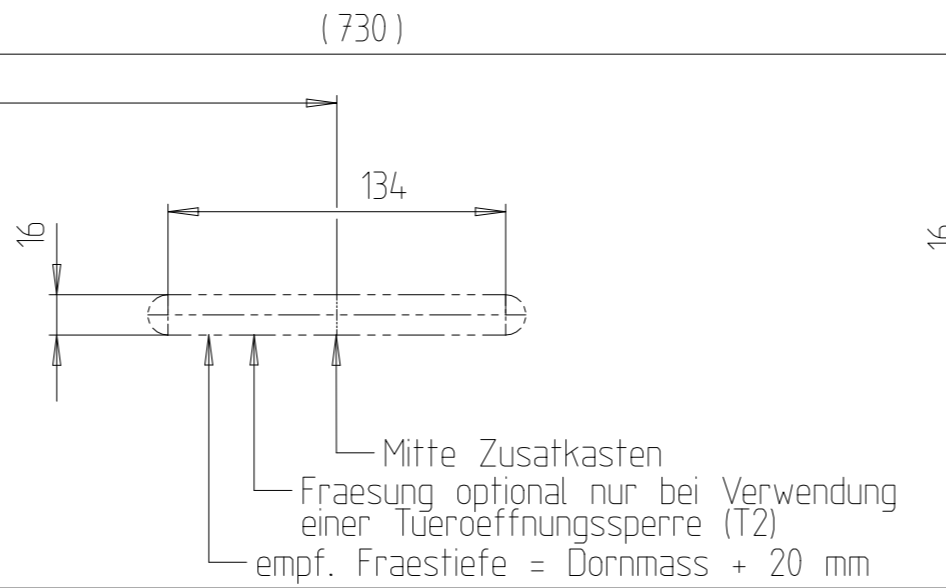
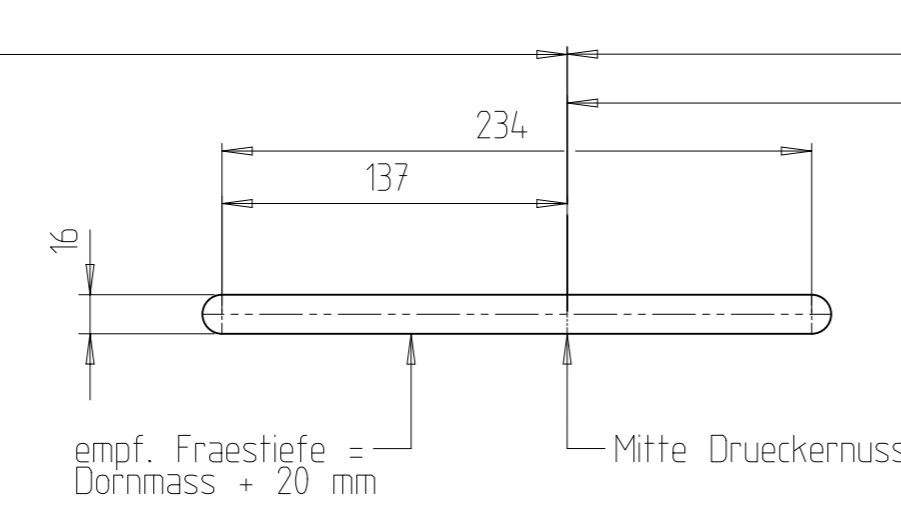
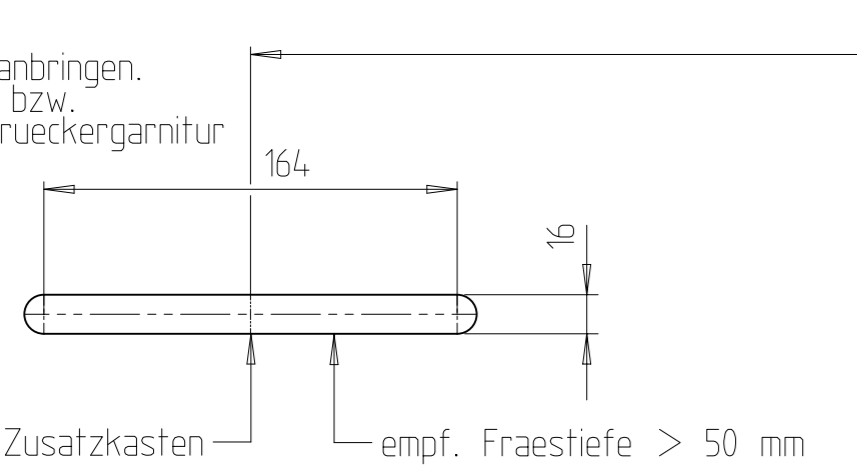
M 1:1



Schlossaufnahmetaschen (M 1:3)
 Taschen mit Fraeser \varnothing 16 mm
 fuer Haupt- und Zusatzschlosskasten
 am Tuerblatt herstellen.

Bohrungen fuer Druckergarnitur
 anbringen.
 Verwenden Sie dazu die Angaben bzw.
 Schablonen des Herstellers der Druckergarnitur

ACHTUNG:
 Abweichende Fraestiefen bei
 Sonderkonstruktionen und/oder
 Profilstulpen bitte anhand der
 Profilzeichnung ermitteln.



Anzugsdrehmoment
 max. 1 Nm
 Form- und Lagetoleranzen
 von Stulp zu Kasten siehe
 WN-121-035

Qty.	Type of Modification	ANT	Drawn	Approved	Date
		EK1-1899910			
Volume /mm³	Weight/g	Material-No.	Item-No.	Tool-No.	
2460,000			BS2300 --- TGF -- 206572 --- K0071		
Scale	1 : 2	Tolerance	Part-Description		
		ISO2768 H	MFS		
Additional Note		Document No.			
ABGERUNDET F20, SENK-NR 1		1.2300.24932		Doc. Part No.	Revision
				065	00
Drawn	Baumeister	KFV		Test procedure	Status
Date	17.10.2018				
Appr.	Hoerter				
Date	17.10.2018				
Replacement for :		Replaced by :		Size	U